

The background image shows the Markham Stouffville Hospital, a modern multi-story building with large glass windows and a central tower. The image is overlaid with a semi-transparent blue layer. A diagonal line splits the image from the bottom right corner towards the top right. The text is in white, bold, sans-serif font.

# HOW **MARKHAM STOUFFVILLE HOSPITAL** WAS TRANSFORMED INTO AN INTEGRATED WELLNESS COMMUNITY

**B+H Architects in Association with Perkins+Will Architects**  
**EUROPEAN HEALTHCARE DESIGN 2017**

Presented by:  
*William P. Nankivell: CEO, Principal, B+H Architects*

# WHO WE ARE



A legacy of over  
**60 Years**  
of achievement



Projects in  
**30+**  
countries



Over  
**50 years**  
of healthcare  
design experience



**350+**  
staff in  
**10 integrated  
studios** around  
the world



Extensive  
**P3**  
healthcare  
project expertise

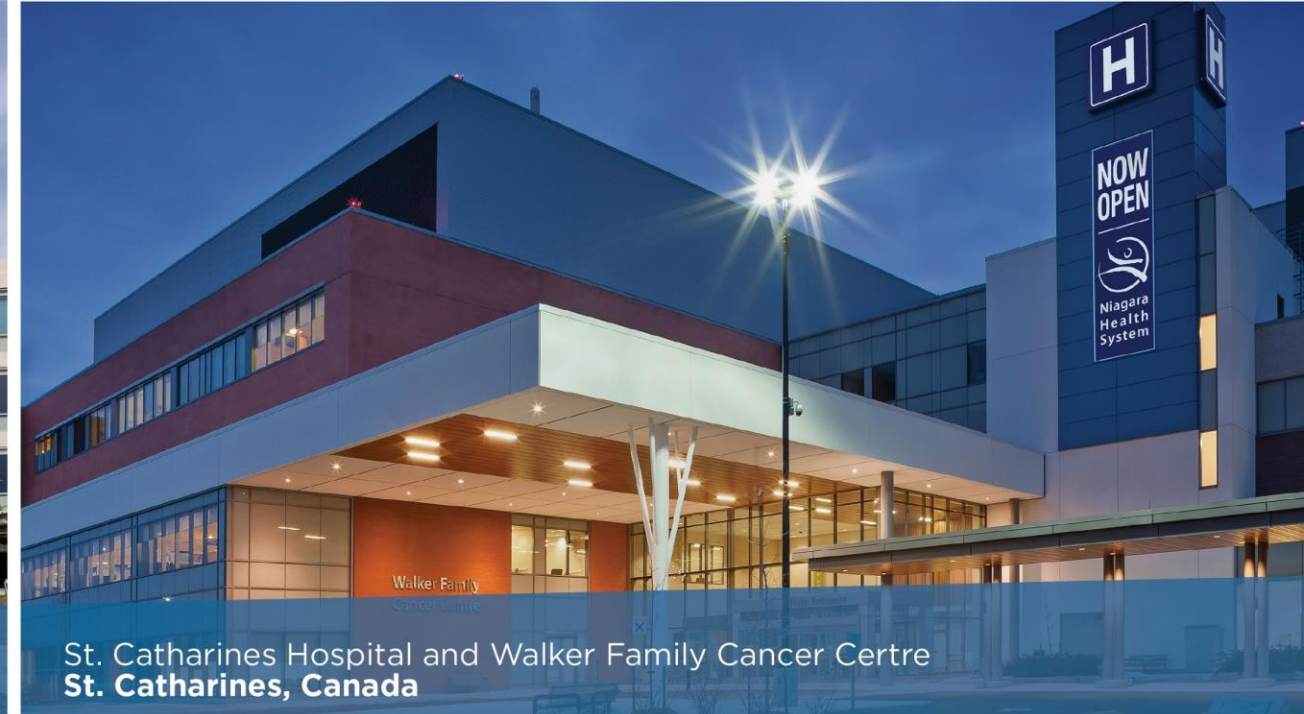


**90+**  
healthcare  
projects  
worldwide





Gleneagles Medini Hospital  
Iskandar, Malaysia



St. Catharines Hospital and Walker Family Cancer Centre  
St. Catharines, Canada



Our Lady Mercy Wing, St. Joseph's Health Centre  
Toronto, Canada



Changi General Hospital, The Integrated Building  
Singapore



# MARKHAM STOUFFVILLE HOSPITAL

**Markham, Ontario, Canada**







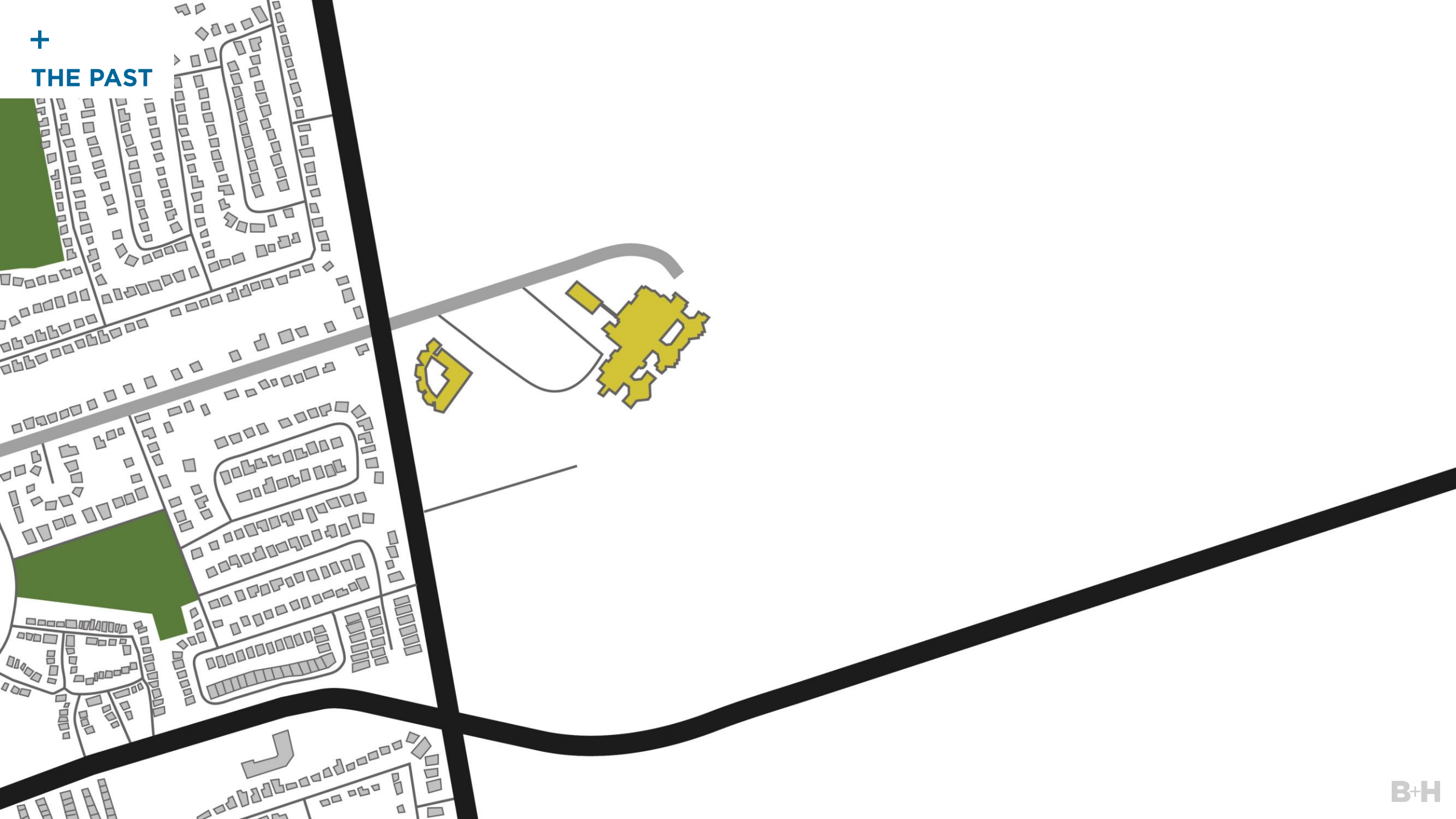
THE PAST







## THE PAST







## THE PRESENT







## THE FUTURE





# 1990

+

**Markham  
Stouffville  
Hospital**





# 1995

+

## Cornell New Urbanist Neighbourhood



Image source: The Toronto Star



# 2006

+

**Markham population  
Increases 70%  
in 15 years**

Image source: IDuke (English Wikipedia)

**B+H**



# 2007

+

## Cornell Community Centre and Library

CORNELL COMMUNITY CENTRE & LIBRARY

Image source: City of Markham

B+H



# 2007

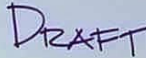
+

**B+H and  
Perkins+Will**





## Synergies





## Benefits to MSH:

+

- Medical library
- Therapy pool
- Physical rehabilitation facilities
- Presentation theatre
- Snoezelen room

Image source: Perkins+Will





## Benefits to Markham:

- Building site
- Operational efficiencies
- Increased usage of facilities
- Development of surrounding neighbourhood
- Enhanced community health and wellness
- Long term expansion and regeneration





## Benefits to Markham:



- Building site
- Operational efficiencies
- Increased usage of facilities
- Development of surrounding neighbourhood
- Enhanced community health and wellness
- Long term expansion and regeneration



# CREATING THE WELLNESS COMMUNITY

**Translating the project vision,  
priorities and goals into reality**



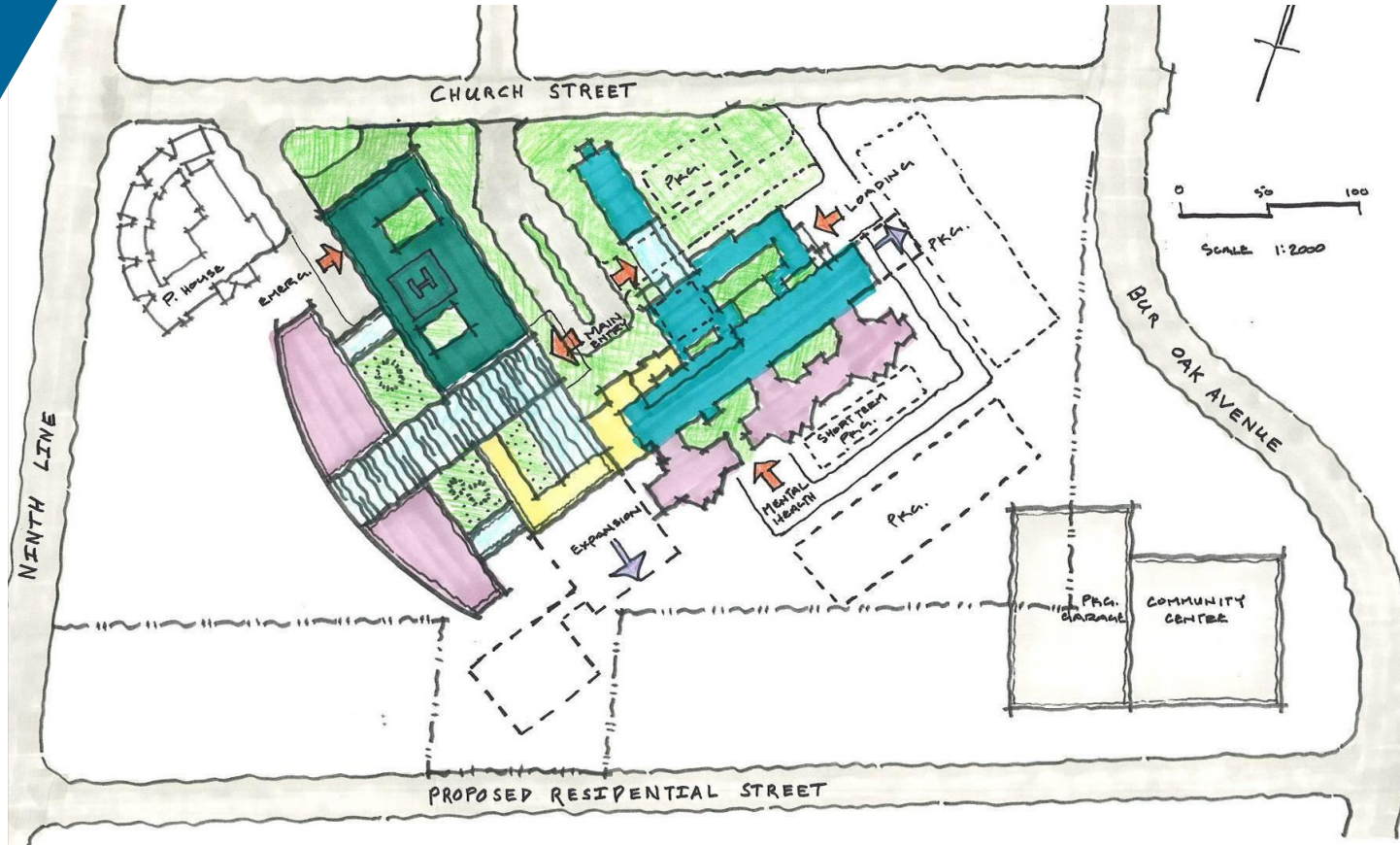


## Project Objective:

+

Capitalize on the site and existing facilities, and enable future growth.

### Option 1 “Crossroads”



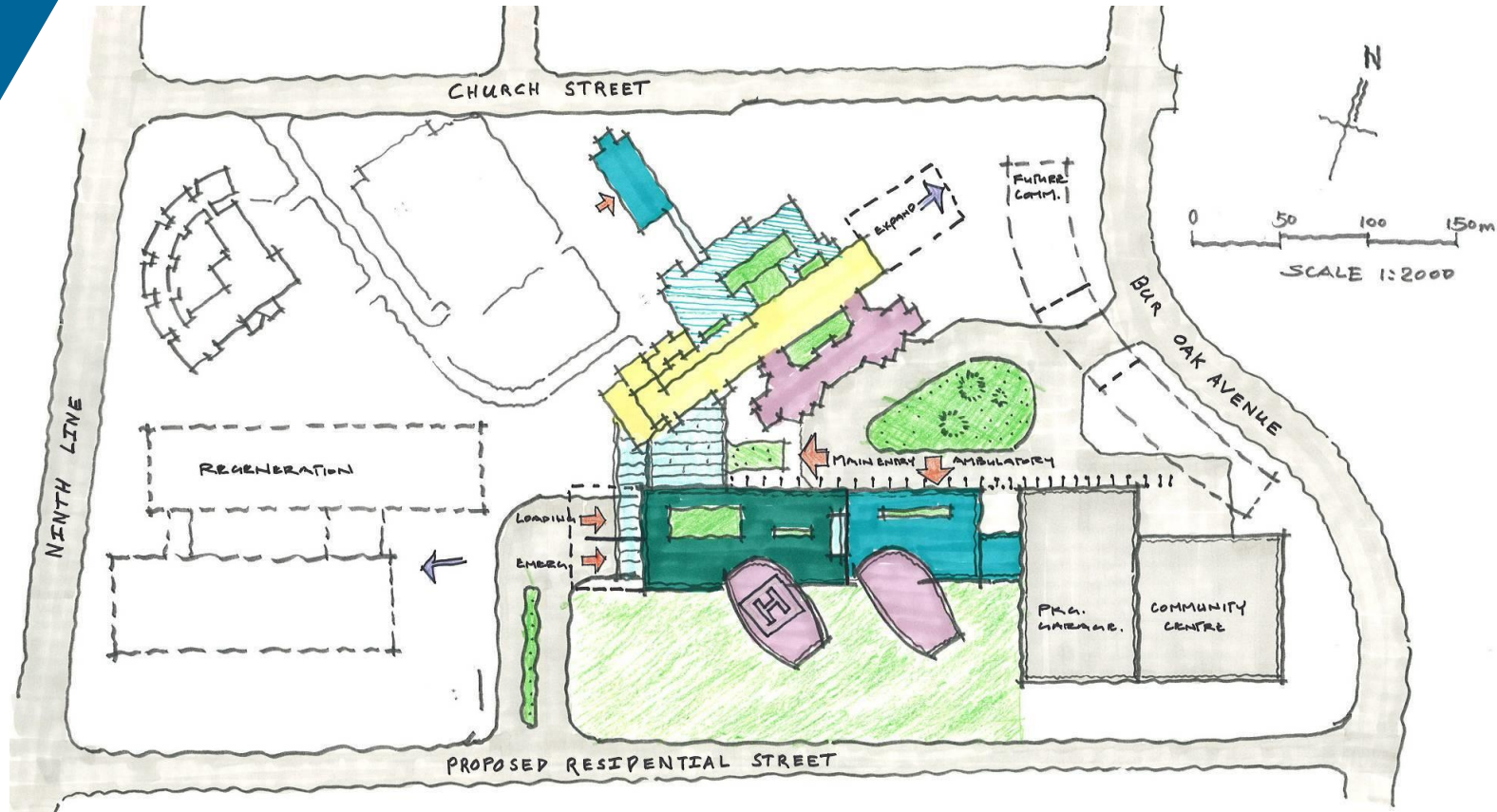


## Project Objective:

+

Capitalize on the site and existing facilities, and enable future growth.

### Option 2 "Campus"



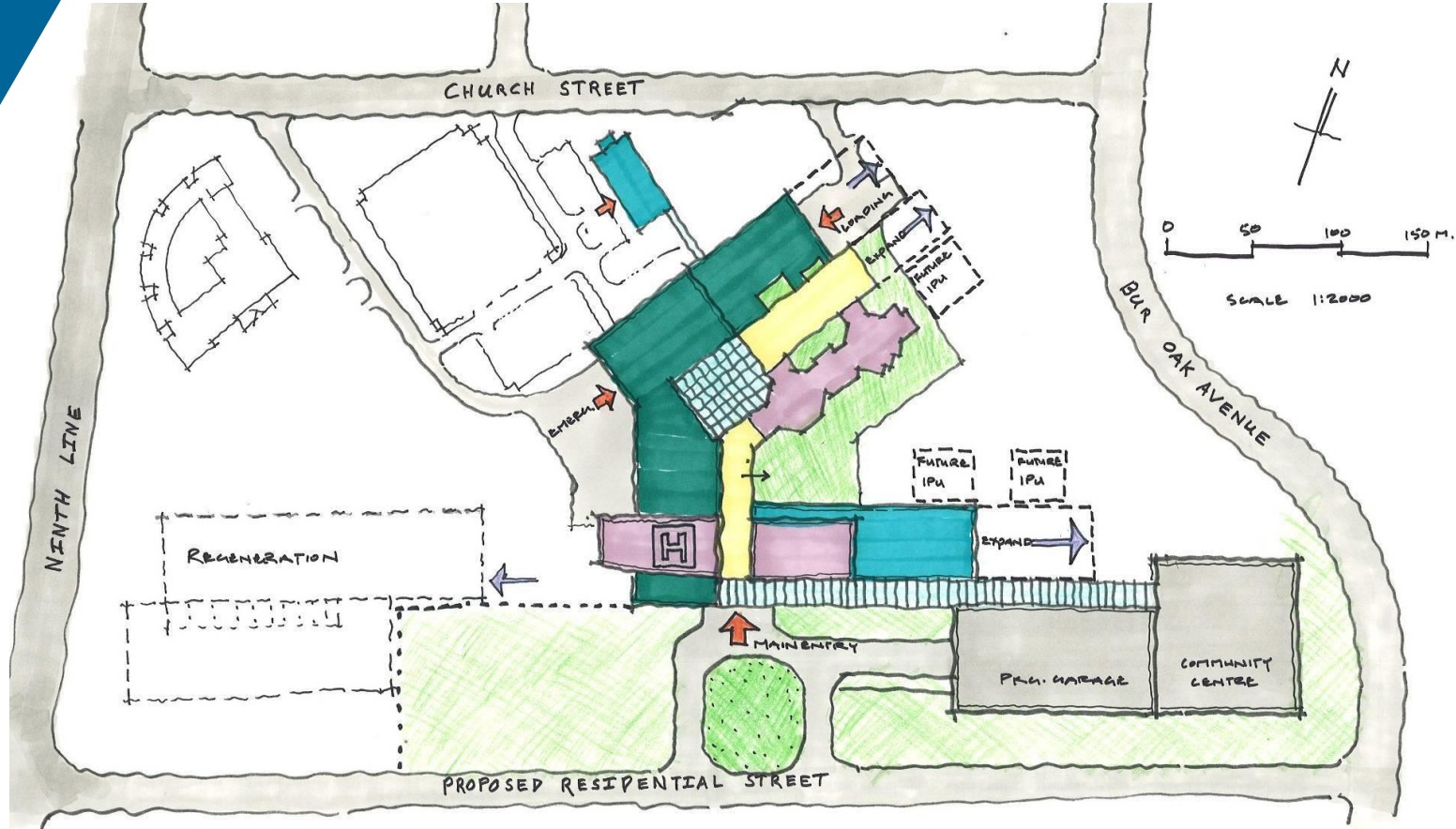


## Project Objective:

+

Capitalize on the site and existing facilities, and enable future growth.

### Option 3 "Commons"



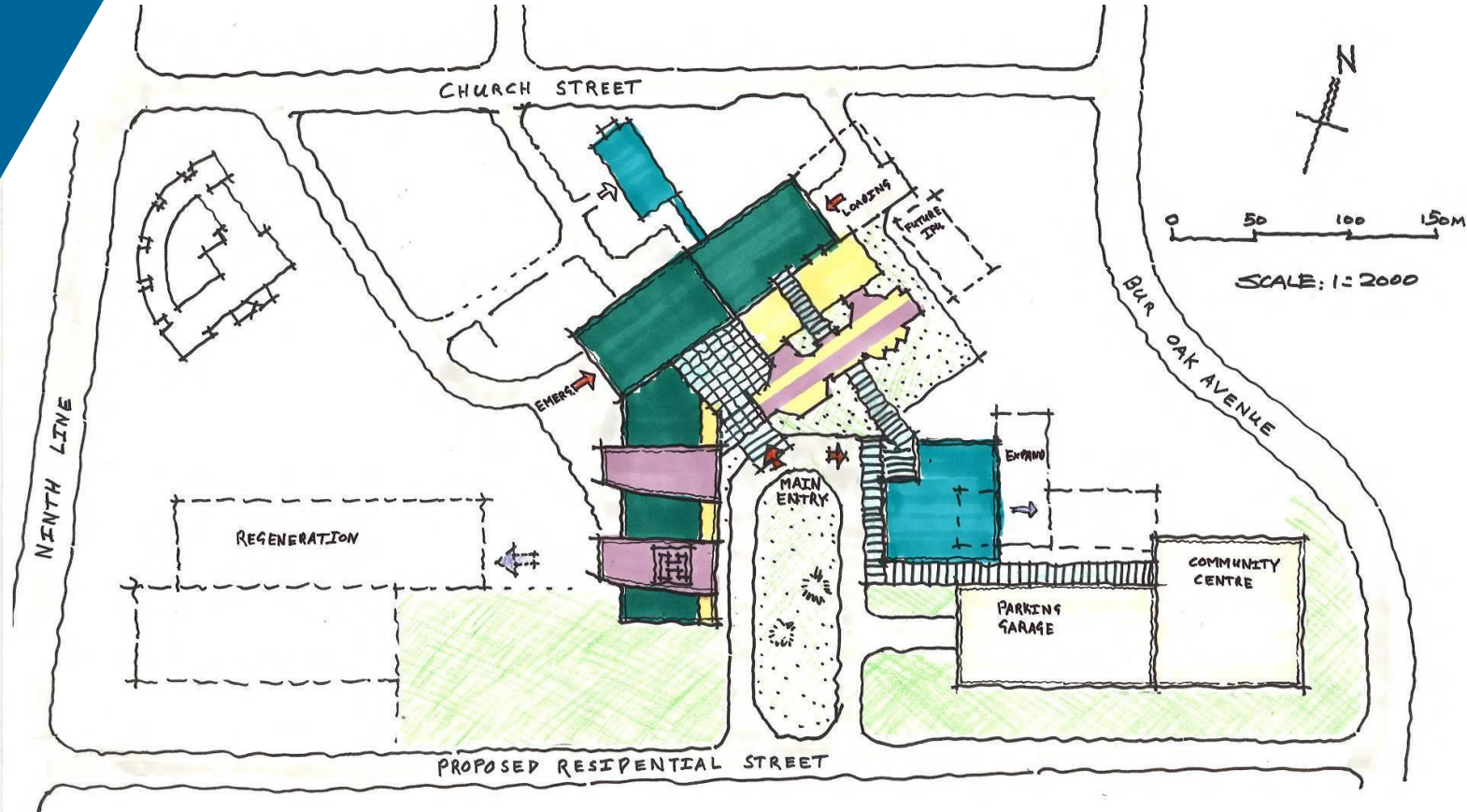


## Project Objective:

+

Capitalize on the site and existing facilities, and enable future growth.

### Option 4 "Campus Commons"



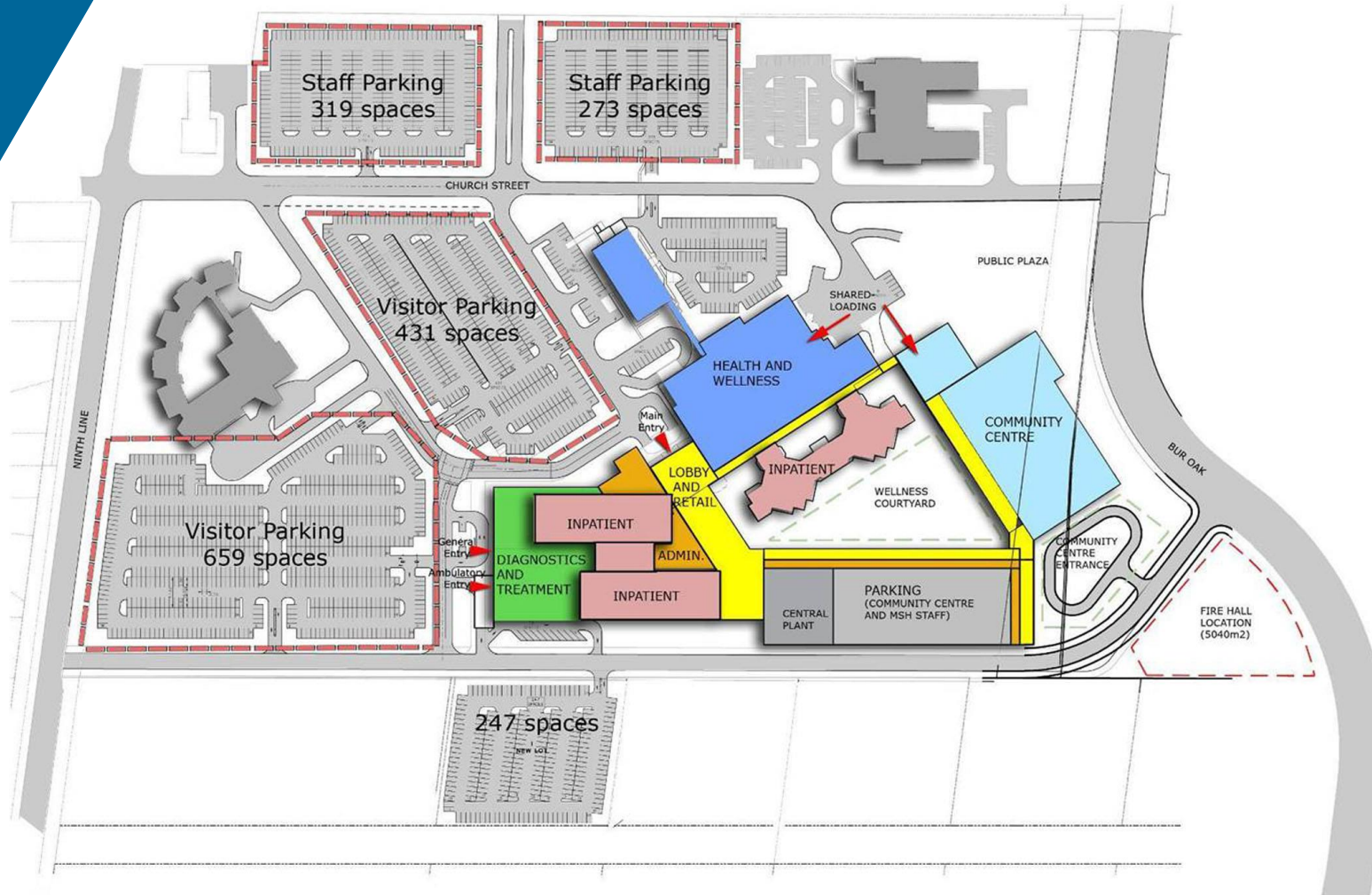


## Project Objective:

+

Capitalize on the site and existing facilities, and enable future growth.

### Option 5 “Vertical Campus”





## Physical and operational integration:

+

- Co-location of facilities
- Physical connections
- Shared spaces
- Cross-programming





## Physical and operational integration:

+

- Co-location of facilities
- Physical connections
- Shared spaces
- Cross-programming

Existing  
Hospital

Long Term Care  
Residence

Residential Care  
for Disabled Adults



## Physical and operational integration:



- Co-location of facilities
- Physical connections
- Shared spaces
- Cross-programming

**New Medical  
Office Building**





## Physical and operational integration:

+

- Co-location of facilities
- Physical connections
- Shared spaces
- Cross-programming

New Hospital  
Expansion





**Physical and  
operational integration:**

+

- Co-location of facilities
- Physical connections
- Shared spaces
- Cross-programming

**New Community  
Recreation Centre  
& Public Library**





## Physical and operational integration:



- Co-location of facilities
- Physical connections
- Shared spaces
- Cross-programming

**New Community  
Centre Parking  
Garage**





## Physical and operational integration:

+

- Co-location of facilities
- Physical connections
- Shared spaces
- Cross-programming

New District  
Energy Plant





## Physical and operational integration:

+

- Co-location of facilities
- Physical connections
- Shared spaces
- Cross-programming

New Fire Station



## Project Objective:



Reinforce connections to the community.











5 minute  
walk

10 minute  
walk

15 minute  
walk













Central to the transformation of MSH was the landscape design and connections to nature.





## Project Objective:



Create a sense of place.













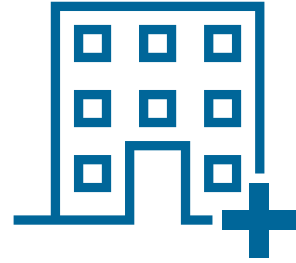
# OPPORTUNITIES FOR FUTURE APPLICATION

SENGKANG COMMUNITY HOSPITAL



Opportunities for  
Future Application:

+



New or existing facility



Urban, suburban or  
rural context



Global model





**Frequently dubbed health districts or health villages, the concept of a healthcare component serving as a community anchor that influences an overall wellness-focused lifestyle is picking up plenty of steam.”**

**-Healthcare Design Magazine, 2014**





**Integrated Building,  
Changi General Hospital,  
Singapore**







**Integrated Building,**  
**Changi General Hospital,**  
Singapore







**Integrated Building,  
Changi General Hospital,  
Singapore**







**Integrated Building,  
Changi General Hospital,  
Singapore**







## Integrated Building, Changi General Hospital, Singapore



- |                      |   |
|----------------------|---|
| Architecture         | <ul style="list-style-type: none"><li>1 CGH Acute Hospital</li><li>2 Medical Centre</li><li>3 IB Building</li></ul>   |
| Existing Buildings   | <ul style="list-style-type: none"><li>4 Simei Care Centre &amp; St. Andrew's Community Hospital</li><li>5 Orange Valley Nursing Home</li></ul>  |
| Planning & Landscape | <ul style="list-style-type: none"><li>6 Urban Tree Line Streetscape</li><li>7 Arrival &amp; Drop-Offs</li><li>8 Reception</li><li>9 Water Garden</li><li>10 Outdoor Cafe</li><li>11 Tree Clusters with Seating Edge</li><li>12 Village Plaza</li><li>13 Fish Pond &amp; Flowering Tree Pods</li><li>14 Retail Kiosk</li><li>15 IB Plaza</li></ul> |





**Woodlands Integrated  
Healthcare Campus  
(Shortlisted Design  
Competition Entry),  
Singapore**







**Woodlands Integrated  
Healthcare Campus  
(Shortlisted Design  
Competition Entry),  
Singapore**







**Woodlands Integrated  
Healthcare Campus  
(Shortlisted Design  
Competition Entry),  
Singapore**







Woodlands Integrated  
Healthcare Campus  
(Shortlisted Design  
Competition Entry),  
Singapore







**Our Lady Mercy Wing,  
St. Joseph's Health Centre,  
Toronto**







**Our Lady Mercy Wing,  
St. Joseph's Health Centre,  
Toronto**







THANK YOU

